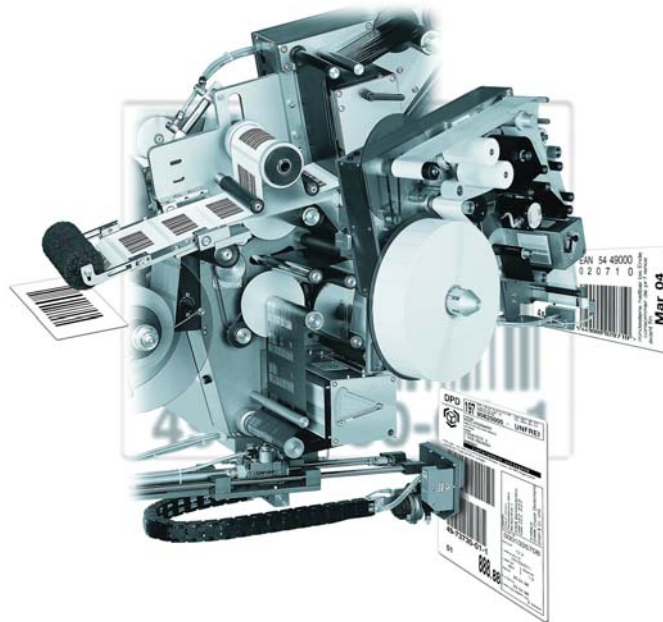




11 reasons for choosing Logopak



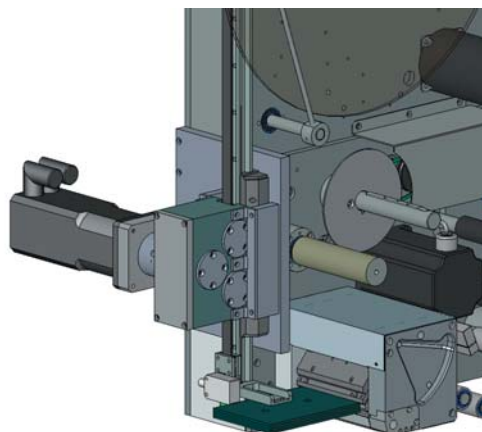
Europe's first name in print and apply labelling



1. High flexibility

High flexibility due to IN-HOUSE development of all mechanical components, labeller software and data communication tools.

Result: Only 4 basic machine modules, which can be combined with a large number of custom made applicators. For over 25 years LOGOPAK has specialized in construction of print + apply labelling machines.



2. LOGOPAK project engineer team

A highly sophisticated team of project engineers work out production instructions according to customer's orders. The responsible project engineer plans and controls the machine specification, documentation and timetable for installation plus the final coordination with the customer.



3. LOGOPAK print heads

Very robust construction, designed for industrial environments - NO table top printer parts from external suppliers.

Available print widths are 104/160/210 mm. For thermal-direct and thermal- transfer printing. Print head can be easily replaced within 3 minutes, no readjusting required.



4. LOGOPAK machine construction

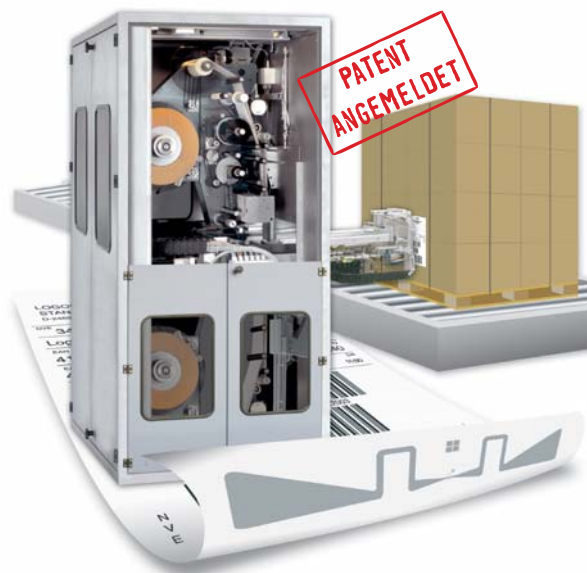
Designed for the implementation in industrial environments.

Machine chassis made of 10 mm cast and skimmed aluminium plates, all other machine parts made of stainless steel, all guides polished and hardened. Heavy-duty bearings and industrial plug connectors, Berger-Lahr stepper motors, Festo pneumatic standard, robust welded steel support stand.



5. LOGOPAK built-in machine intelligence LEAP II

Dual 64-bit RISC high-speed processors for graphics and data communication via RS232 or network. 1-4 MB memory for article files, layouts and logos. Industrial CAN bus for I/O control, with flexible programming using high level PLC language. VGA touch screen for manual data entry, status and error messages. 4 industrial V24 interfaces.



6. LOGOPAK research and development

Our in-house competence centre is responsible for the interdisciplinary development of the systems' processor technique, electronic design, new boards and firmware, as well as for the integration of new technologies, e.g. RFID..



7. LOGOPAK data handling

The result of 25 years of continuous and joint efforts in the development of individual software have been condensed into LOGOTOOLS: standardized software applications for label design, data backup, traceability, data handling, synchronization of label data sets, ZEBRA emulation.

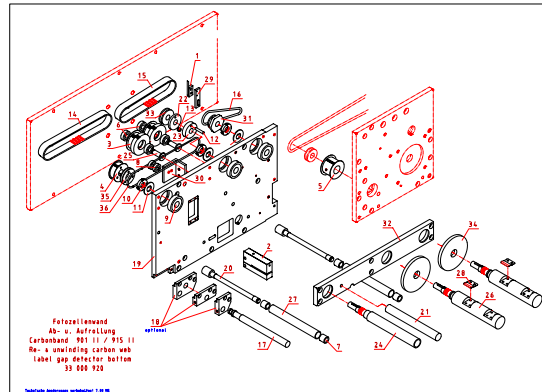


8. LOGOPAK after-sales service

All LOGOPAK customers have an efficient and highly qualified technical service team at their disposal. During office time the central service department at LOGOPAK head office is your first competent partner, accompanying customer staff by telephone with advice and assistance in all technical aspects.

Service technicians, based all over the country, are available for on-site support. LOGOPAK also offers a 24-hours hotline support by telephone.

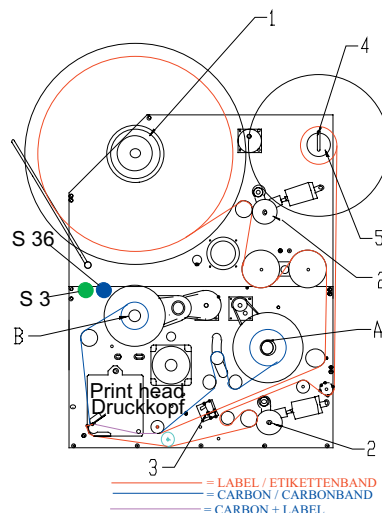
Optionally available for customers is our CONTROL CENTER program that is able to control all internally networked LOGOMATIC labellers and send error messages to customer's supervision and/or to LOGOPAK Hartenholm by email or SMS. Control Center also offers a central backup and updates of all connected labellers at the same time. The remote service module RSM enables fast access to labeller system data by phone..



9. LOGOPAK depth of production

Most of all hard- and software components are the result of our in-house development, and then consequently manufactured in our central workshops in Hartenholm.

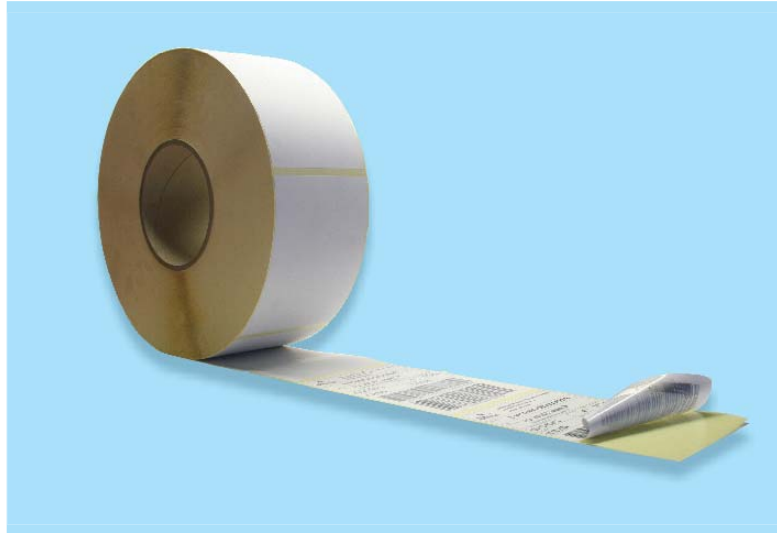
This guarantees fast reaction times, and thanks to LOGOPAK's extensive stock of spare parts for a wide range of products, spares can usually be sent out within a very short time.



10. LOGOPAK training

For the customers' service staff we offer a thorough and practice-oriented 2days' training in our in-house training centre, with consideration of the machines installed on customer's site.

Our approved training program ensures a high training level. We guarantee a qualified training of your staff by our experienced trainers.



11. LOGOPAK consumables

Only the perfect interaction of label material and machine will lead to a reliable function of the labelling system and a convincing print image.

After extensive testing of label materials, carbon foils and adhesives we are able to supply our customers with the adequate consumables, partly from in-house production.

Logopak Systeme
Dorfstraße 40
D-24628 Hartenholm

Logopak Int.Ltd.
Kettlestring Lane
Clifton Moor, York YO30 4XF
Great Britain

Logopak S.A.
1, Rue M. Berthelot
BP 76
F-91 323 Wissous

Logopak Benelux B.V.
Jadelaan 123
P.O. Box 465
NL-2130 AL Hoofddorp

Logopak Systems AB
Lilla Bommen 1
SE-411 04 Göteborg

Logopak Vertriebsgesellschaft
West mbH
Lintorfer Waldstraße 10
D-40489 Düsseldorf

Logopak Vertriebsgesellschaft
Süd mbH
Mönsheimer Straße 20
D-71299 Wimsheim

www.logopak.com
Tel. (0 41 95) 99 75-0
Fax (0 41 95) 12 65

Tel. (0 19 04) 69 23 33
Fax (0 19 04) 69 07 28

Tel. (01) 64 47 15 16
Fax (01) 69 20 25 74

Tel. (0 23) 5 55 50 80
Fax (0 23) 5 55 67 79

Tel. (0 31) 7 00 12 30
Fax (0 31) 15 12 01

Tel. (02 03) 7 42 23-0
Fax (02 03) 7 42 23 39

Tel. (0 70 44) 95 44 70
Fax (0 70 44) 95 44 71