

(00) 340382230000000009



*The Logopak  
machine program*

**POWER<sup>®</sup>  
LEAP III**



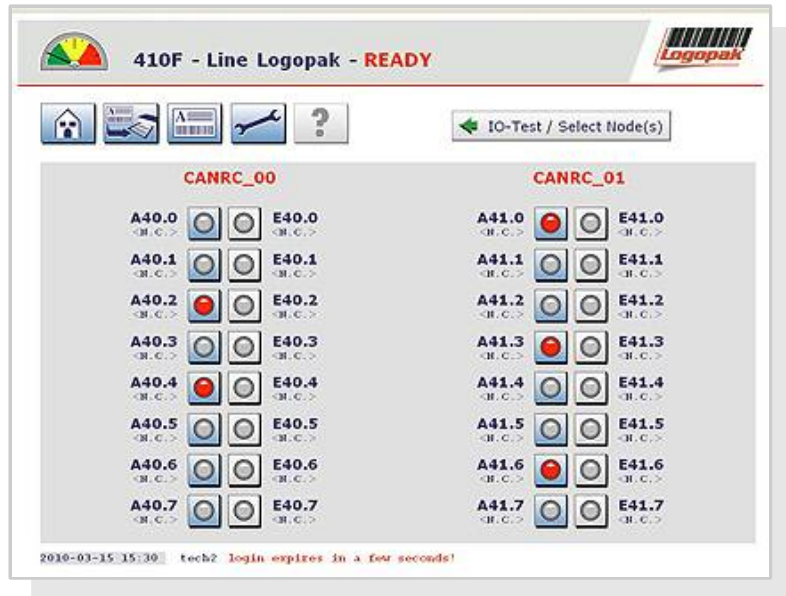
## Our new system software **POWER<sup>®</sup> LEAP III**

- ▶ Control box IP54 with 15" Touchscreen for manual data entry, optional display of Fifo-functions etc., pre-selection of service intervals, display of actually loaded label-layouts etc.
- ▶ 400 Mhz 32-bit RISC CPU
- ▶ 4 MB CMOS memory for layouts, logotypes and configurations; upgradeable CompactFlash memory card
- ▶ Failure storage
- ▶ RFID Tag-On-Demand: Pre-installed connection for integration of reader-antenna for EPC Class 1 Gen2 Transponder
- ▶ Integrated Ethernet-connection
- ▶ Continuous control of print plate to ensure the best possible print image (Option), easy connection to external service tools
- ▶ Complete control all off mechanical operations and floating outputs to external systems; i.e. materials handling etc.

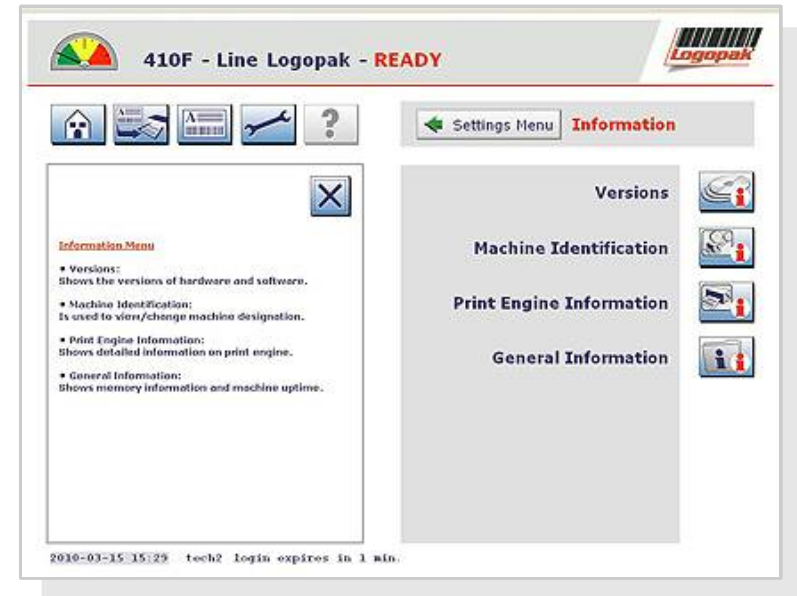
(00) 340382230000000009



# VGA-Touchscreen-Displays



Entry/display of the active I/O outputs



Machine set up

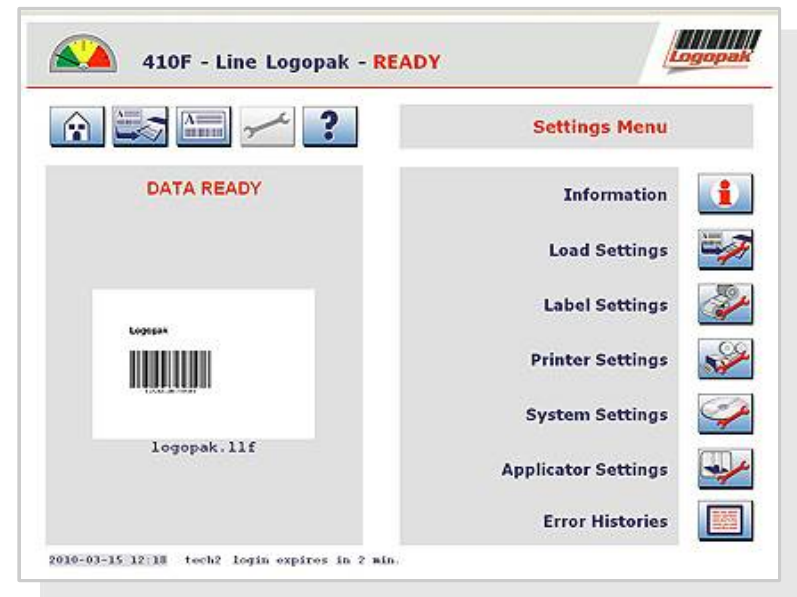
(00) 340382230000000009



# VGA-Touchscreen-Displays



*Entry of print parameters*

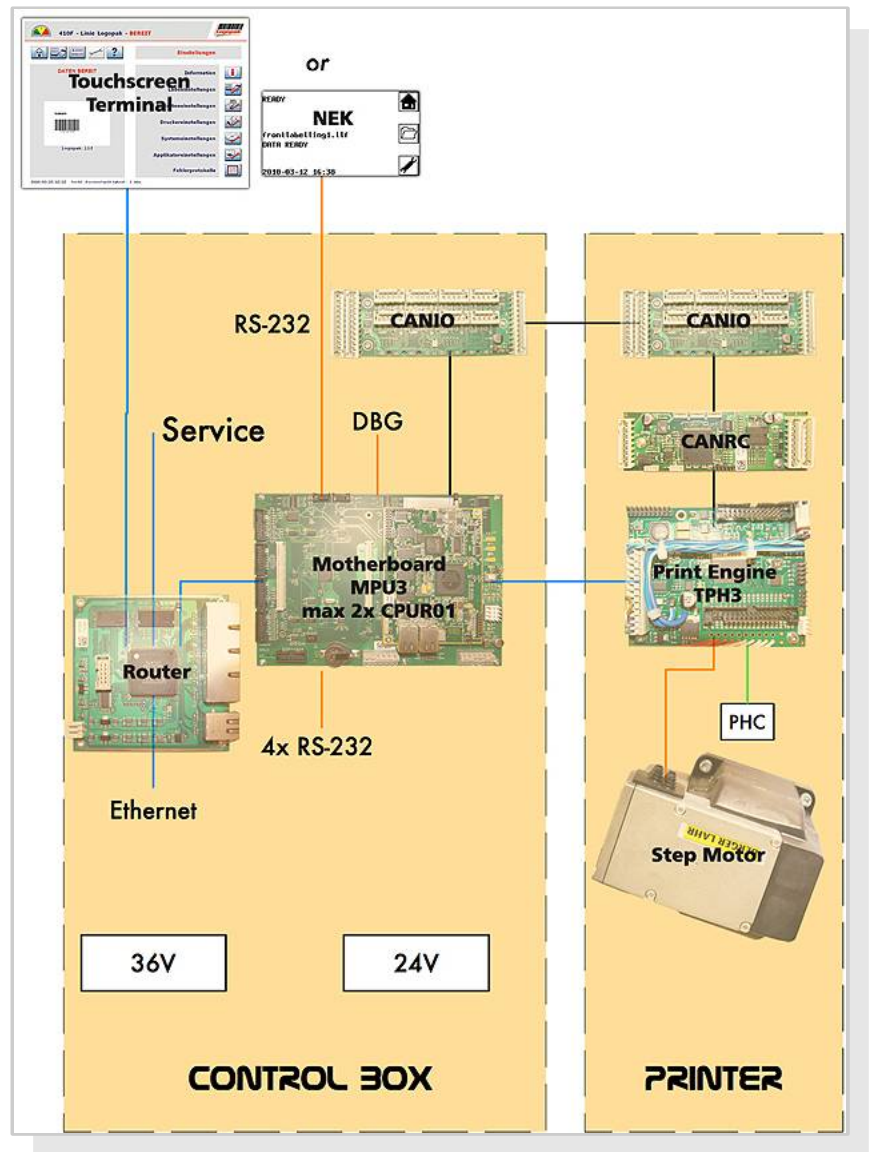


*Visualization of active label download*

(00) 340382230000000009



# The structure of Power Leap III

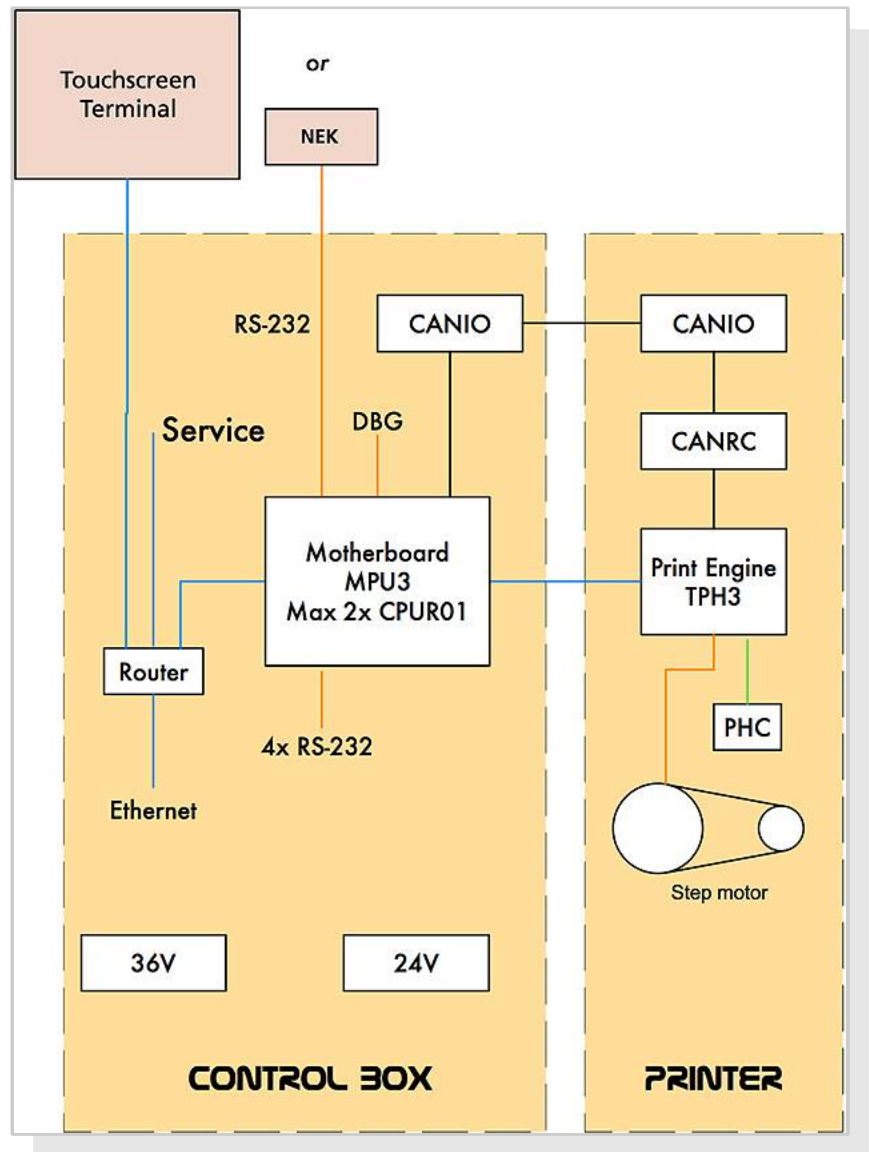


- ▶ Two units: controller and printer.
- ▶ Internal I/O-communication based on CAN-Bus.
- ▶ Internal print data communication based on Ethernet.
- ▶ 3 phase stepper motor with integrated stepper motor card.
- ▶ CANRC for controlling un- and rewind-motors.

(00) 340382230000000009



# Data connections and Hardware PLIII



## Hardware:

- ▶ 3 MB CMOS memory for layouts and logotypes
- ▶ 1 MB CMOS memory for setup and data logging
- ▶ 128 MB Work memory
- ▶ 32 MB Firmware memory
- ▶ 8 GB solid-state harddisk in ATC3 touch terminal (GUI)

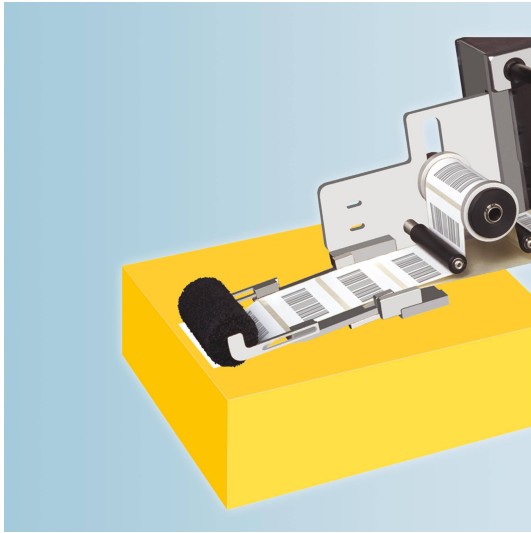
## Connections:

- ▶ 4 x ComServer, virtual (W&T compatible)
- ▶ 1 x HTTP for external browser
- ▶ 4 x RS-232 for customer / internal devices (2x RS-422 optional)
- ▶ 1 x network connector (internal) for service
- ▶ 1 x network connector (internal)

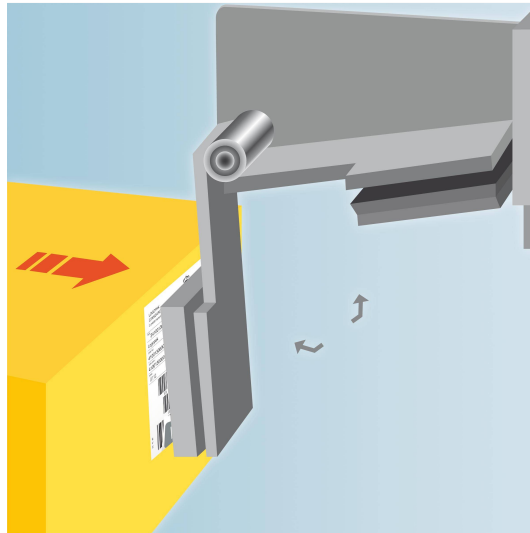
(00) 340382230000000009



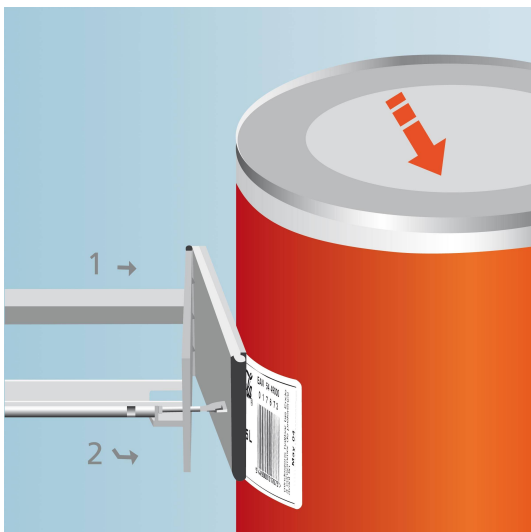
# Standard-Applicators



**Type M:**  
**Batch labelling**  
Roll-on applicator for fast moving uniform surfaces.



**Type F: Front of pack**  
**„real time“**  
vacuum pad applicator with floating plate for front labelling



**Type TM:**  
**„Real-time“ labelling**  
vacuum plate and telescopic arm with twin air cylinder for uneven or undulating surfaces

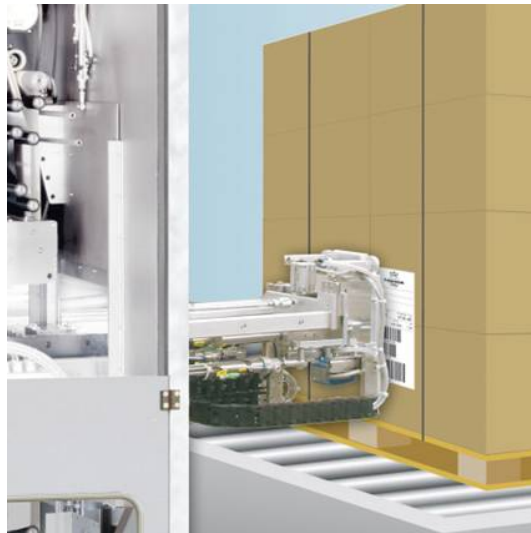


**Type B90:**  
**„Blow on“ high speed labelling**  
allowing high speed label application with no product contact

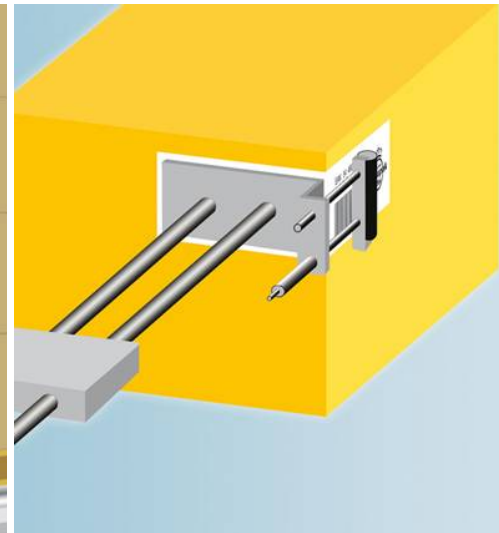
(00) 340382230000000009



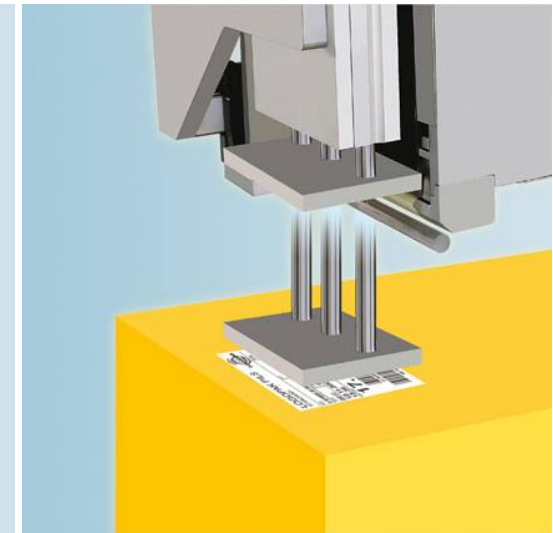
# Standard-Applicators



**Type PFR:**  
**Pallet labelling**  
vacuum pad with telescopic unit for side, front and rear labelling, for pallets in intermittent motion



**Type TE:**  
**„Real-time“ labelling**  
vacuum plate with telescopic arm and round the corner applicator with additional Roll-on function

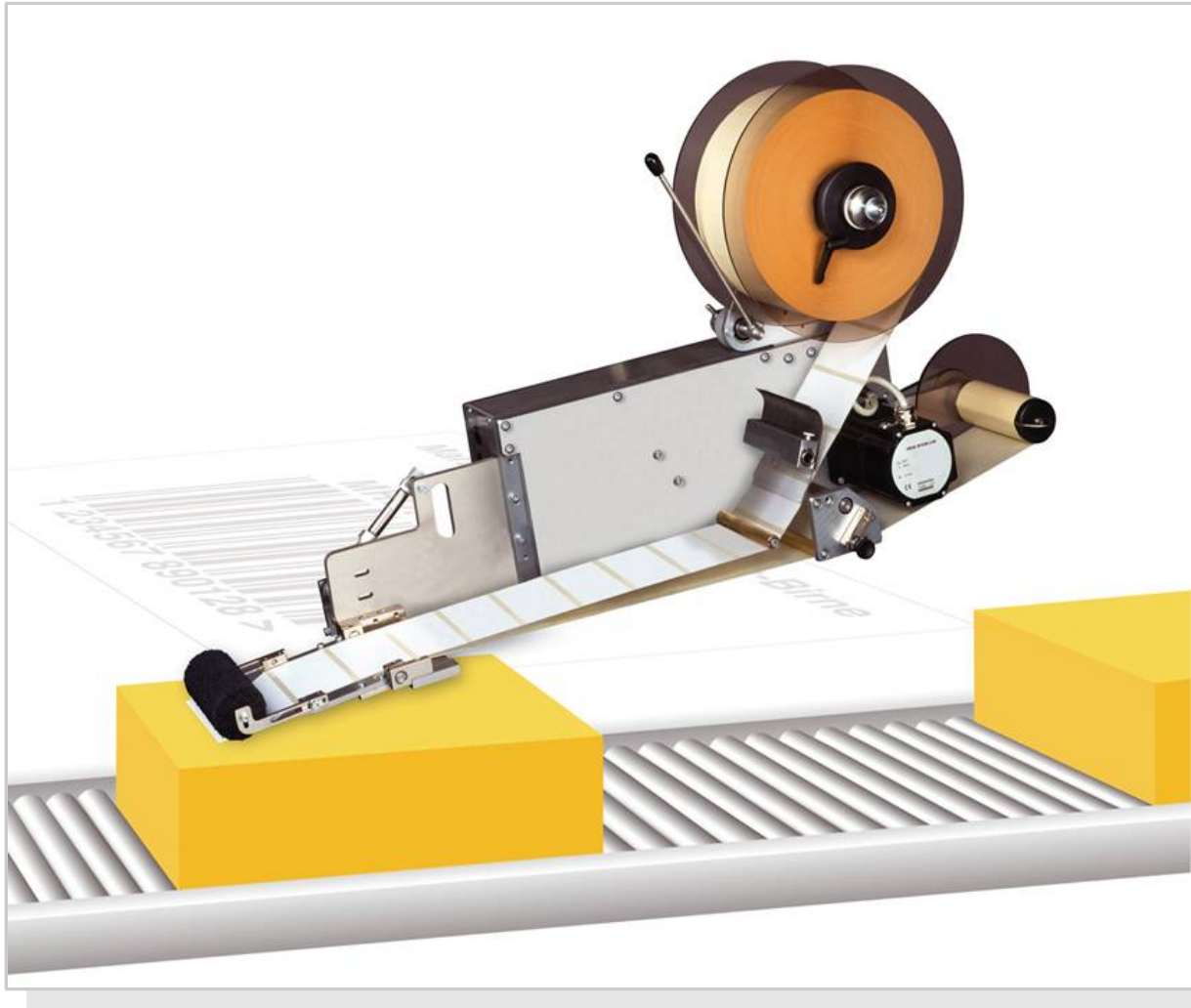


**Type T:**  
**„Real-time“ labelling**  
vacuum plate with twin rod air cylinder for variable product height, product in continuous motion

(00) 340382230000000009



# 100 series Logomatic 110 / 115



**Label dispenser for pre- printed labels**

- ▶ Logomatic 110 for up to 110 mm label width
- ▶ Logomatic 115 for up to 156 mm label width
- ▶ 400 m material length

(00) 340382230000000009



# 200 series VLP 210 / VLP 220



## Off-line / Back-up printer for manual labelling

- ▶ VLP 210 with Print Engine for up to 110 mm label width
- ▶ VLP 220 with Print Engine for up to 210 mm label width
- ▶ 300 dpi print resolution (200 dpi optional)
- ▶ 180 m label material length

(00) 340382230000000009



# 300 series Logomatic 310



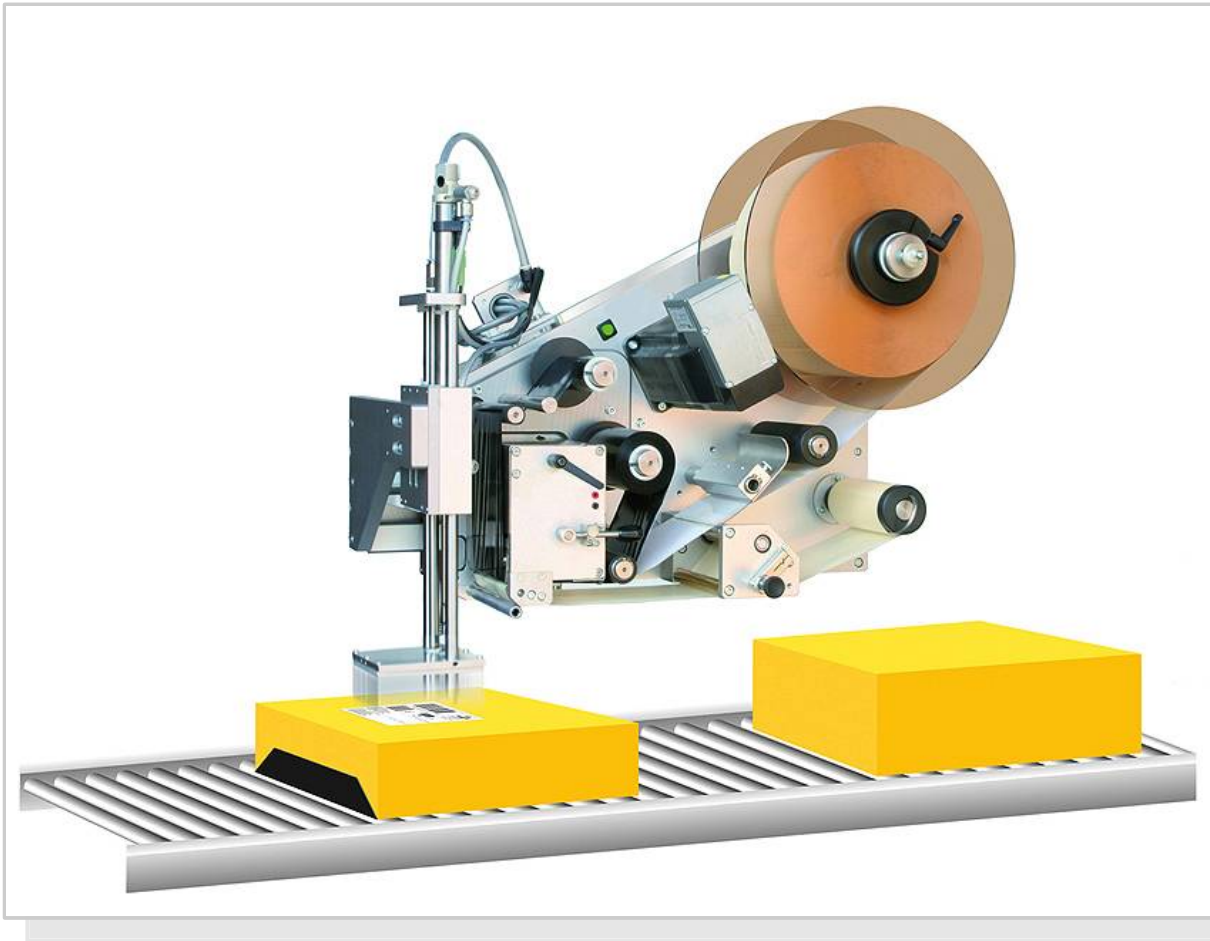
**Automatic Print & Apply labelling system for low- and mid speed applications**

- ▶ Actually the standard 901 series
- ▶ Available with POWER LEAP II, only
- ▶ For label width up to 110 mm
- ▶ 200 dpi or 300 dpi print resolution
- ▶ 400 m material length
- ▶ Thermal direct and thermal transfer printer available
- ▶ Print Engine with quick change system

(00) 340382230000000009



# 400 series Logomatic 410



**Automatic Print & Apply labelling system for low- and mid-speed applications**

- ▶ Up to 110 mm label width
- ▶ 300 dpi print resolution (200 dpi optional)
- ▶ 400 m label material length
- ▶ Print Engine with quick change system

(00) 340382230000000009



## 500 series Logomatic 510 / 515



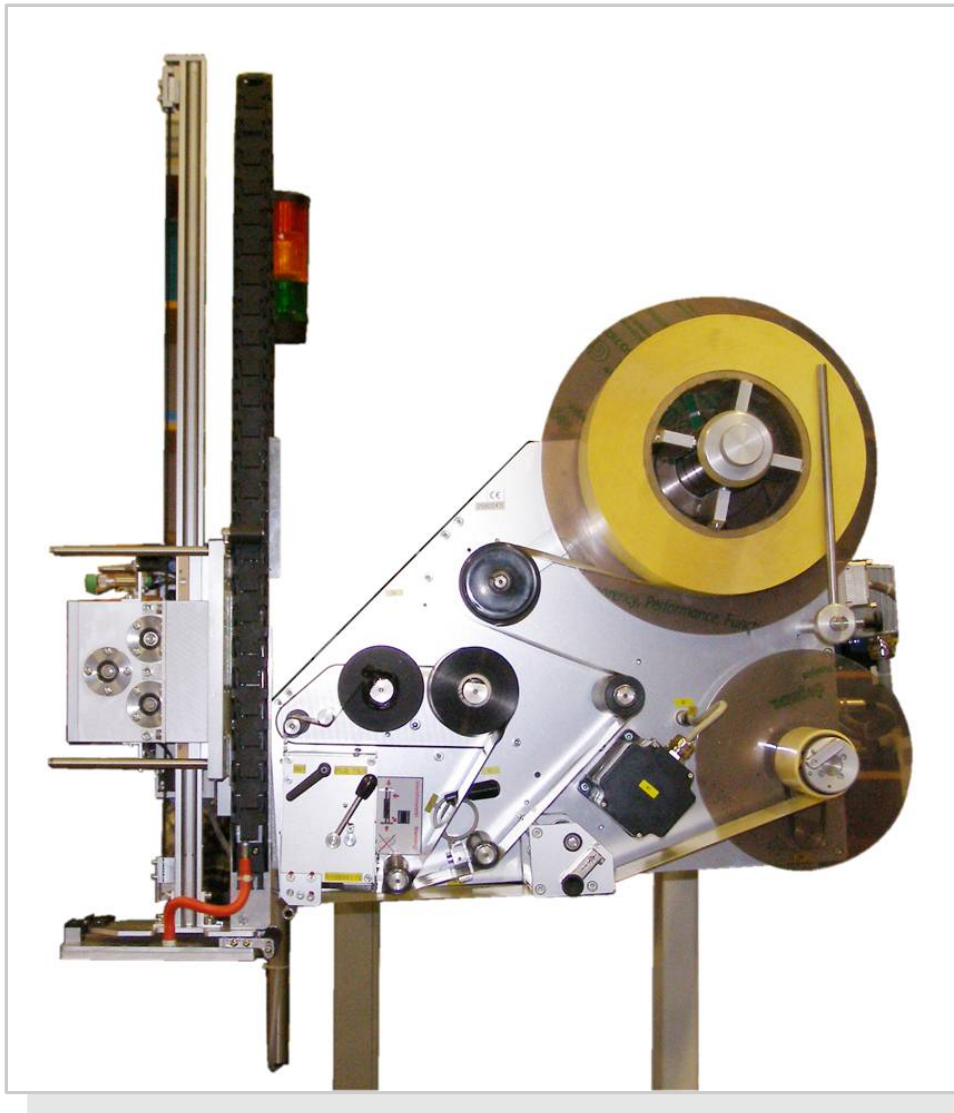
### Automatic Print & Apply labelling system for mid- and high-speed applications

- ▶ Basic machine construction for 160 mm label-web width
- ▶ Logomatic 510 with Print Engine up to 110 mm label width
- ▶ Logomatic 515 with Print Engine for up to 156 mm label width
- ▶ 300 dpi print resolution (200 dpi optional)
- ▶ 600 m label material length
- ▶ Quick change cassette for carbon material (thermal transfer)
- ▶ Print Engine with quick change system

(00) 340382230000000009



# 500 series Logomatic 510 / 515 TBH



## Automatic high-speed Print & Apply labelling system

- ▶ Print Engine with 100 oder 156 mm print width
- ▶ 300 dpi print resolution
- ▶ 600 m material length
- ▶ Quick change cassette for carbon material (thermal transfer)
- ▶ Highspeed applicator for variable product heights of 0 – 600 mm
- ▶ Labelling of products in continuous motion
- ▶ Capacity up to 50 labels per minute
- ▶ Print Engine with quick change system

(00) 340382230000000009

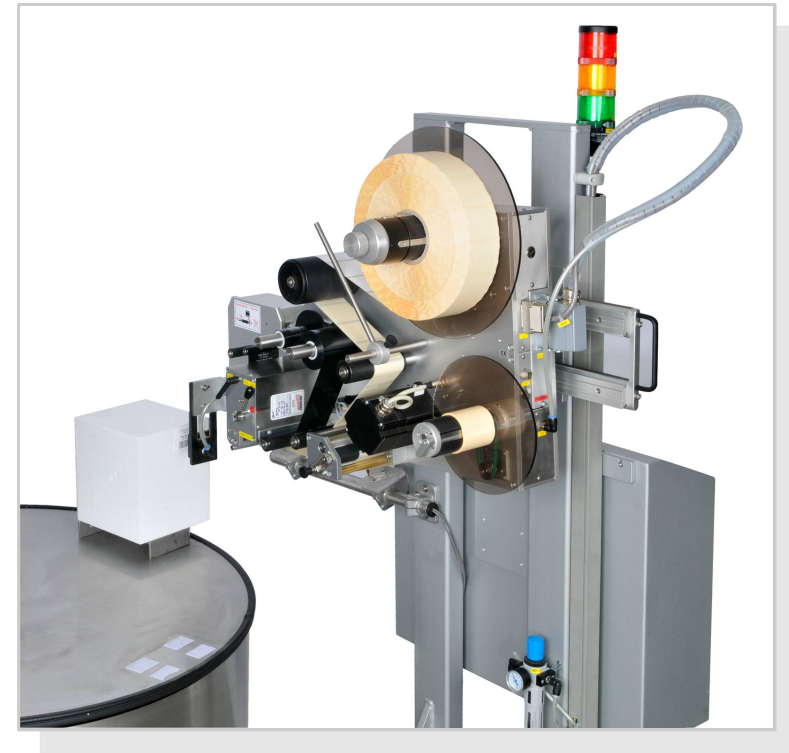


# 500 series Logomatic 510 / 515



**Logomatic 510TK**

- ▶ Keg labelling for variable heights, with Flexo-Pad for sloping surfaces
- ▶ Bar-code control with integrated scanner
- ▶ For intermittent production



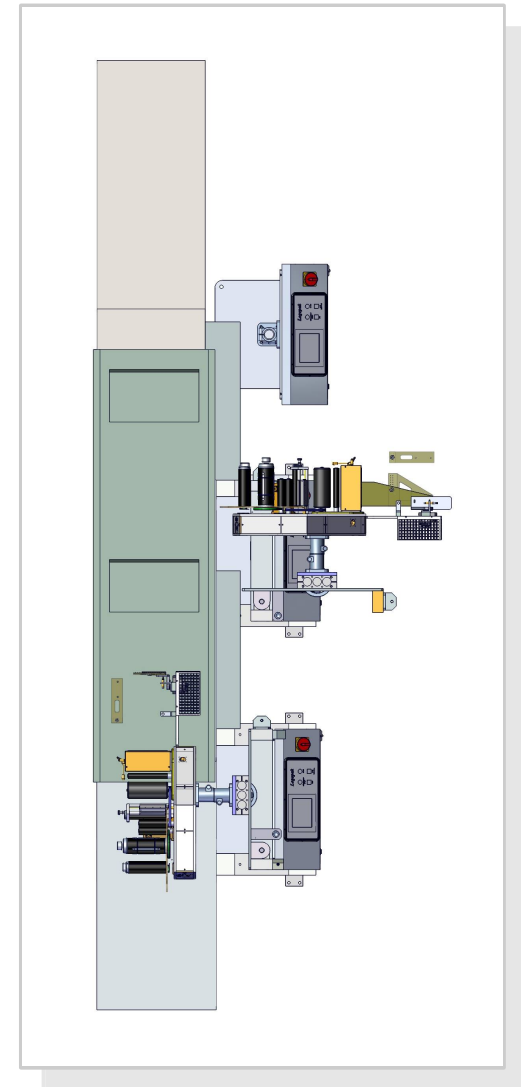
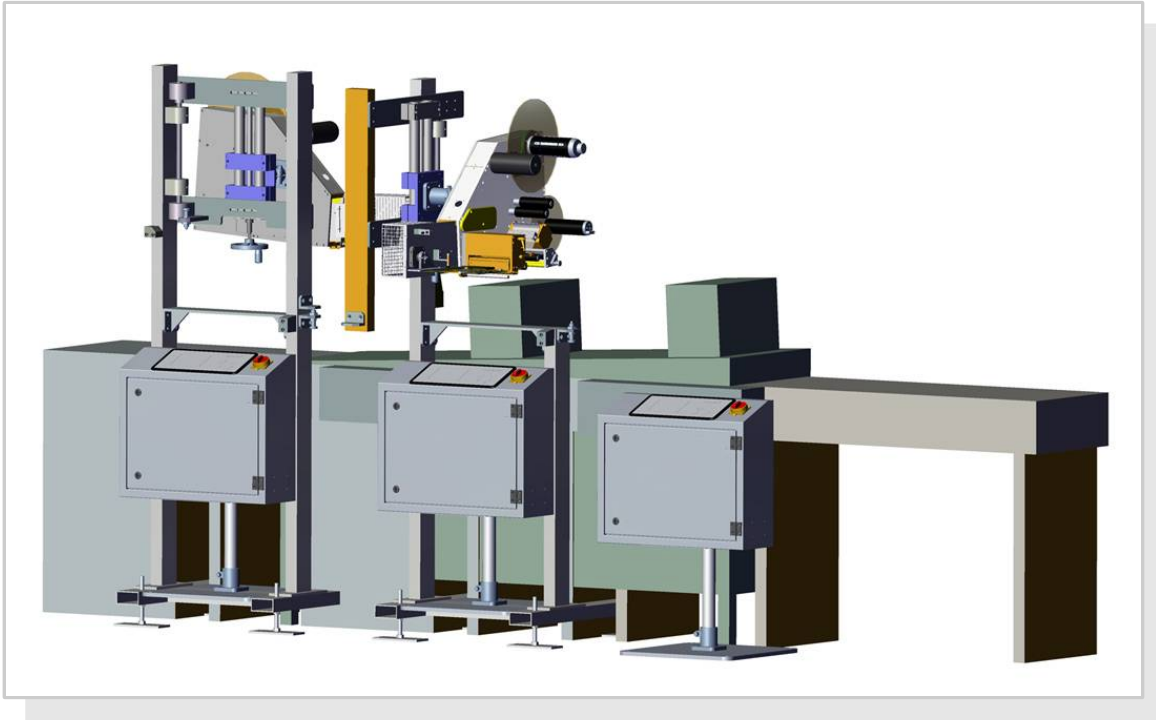
**Logomatic 510/515F**

- ▶ Front labelling of packages
- ▶ Special swing-arm applicator
- ▶ Labelling for continuous package flow

(00) 340382230000000009



# 500 series Logomatic 515 Tandem



## Tandem/Tridem controller

- ▶ Central control box for data connection and triggering of 2 or 3 parallel working labelling systems per line
- ▶ The labellers are running in alternating mode
- ▶ Advantage:
  - best performance on highspeed packing lines
  - minimized change-over time for label material
  - if one system is off-line for service the second system is still fully operational

(00) 340382230000000009



# 800 series Logomatic 815



## Automatic pallet Print & Apply labelling system for standard GS1-applications

- ▶ Up to 140 pallets/h of two adjacent sides labelling
- ▶ 500 mm telescope stroke
- ▶ Up to 156 mm label width
- ▶ 300 dpi print resolution (200 dpi optional)
- ▶ 500 m label material length
- ▶ Integrated scanner verification of EAN 128 serial shipping container code
- ▶ Full steel enclosure, dust tight, with windows and service doors
- ▶ Print Engine with quick change system

(00) 340382230000000009



# 900 series Logomatic 910 / 920 / 925



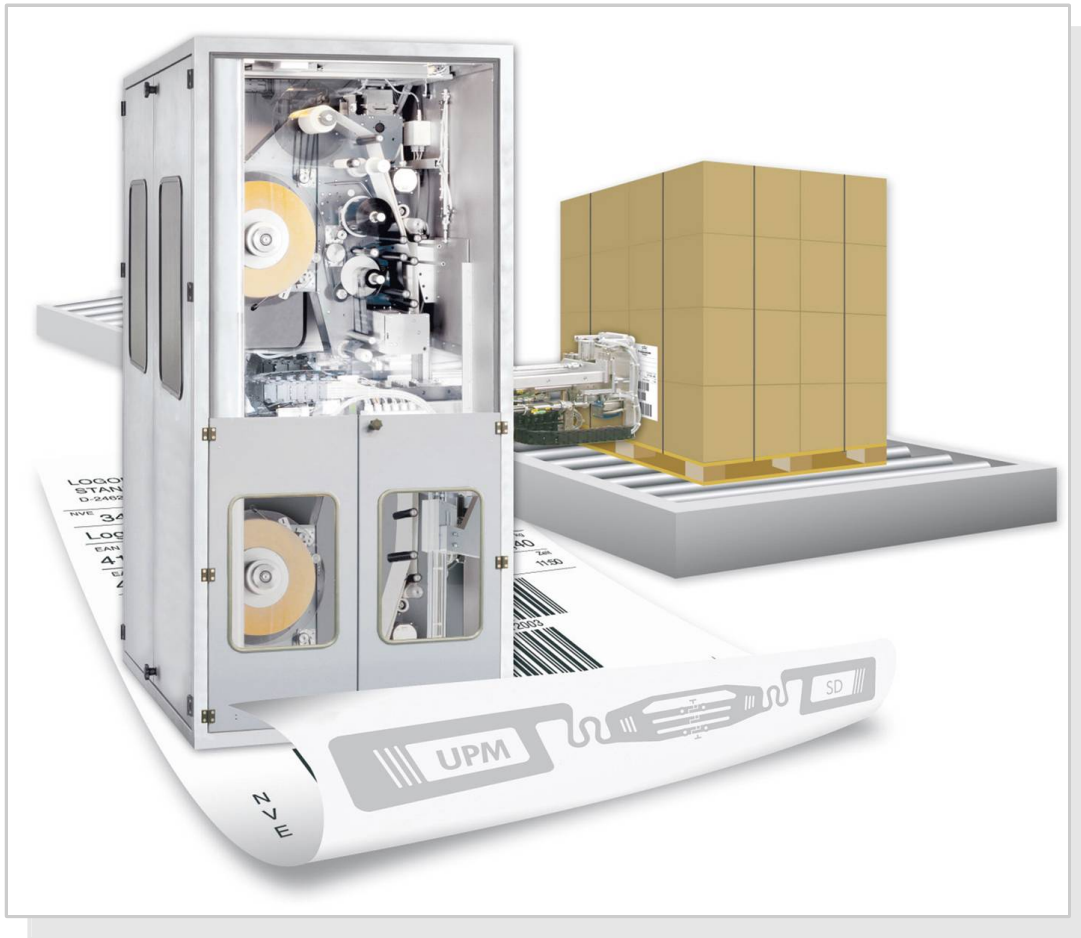
## Automatic Print & Apply labelling system for high speed applications or large size labels

- ▶ With PFR -applicator for pallet labelling up to three adjacent sides and up to 800 mm telescope stroke
- ▶ As DK (double-applicator) -version for pallet labelling with up to 240 pallets/h
- ▶ Logomatic 910 for up to 110 mm label width
- ▶ Logomatic 920 for up to 210 mm label width
- ▶ Logomatic 925 for up to 250 mm label width
- ▶ 300 dpi print resolution (200 dpi optional)
- ▶ 800m label material length
- ▶ Full steel enclosure, dust tight, with windows and service doors
- ▶ Print Engine with quick change system

(00) 340382230000000009



# RFID system



## Semi- and automatic labelling systems with RFID

- ▶ Suitable for all authorized transponders HF 13.56 MHz and UHF 868 MHz range (EPCglobal UHF Class 1 Gen 2)
- ▶ VLP 220 RFID-printer, e.g. ideal as Starter-Kit
- ▶ 910 TB RFID, for real time labelling and up to 60 labels (tags)/min
- ▶ 920 PF RFID with "Tag On Demand" and Flag-Tag functionality, directly at the production line
- ▶ Print Engine with quick change system

(00) 340382230000000009



# LogoTrack RFID verifier station



- ▶ After labelling logged-data are stored in 920 PF and sent to verifier station
- ▶ The verifier can filter out the actual and correct pallet tag, despite the fact that normally there may be additional tagged pallets near the verifier station
- ▶ The verified information may be visualized on PC, sent via Ethernet to host system and/or can trigger via I/O contact customers conveyor system
- ▶ Tag verifying operates within the long range field

